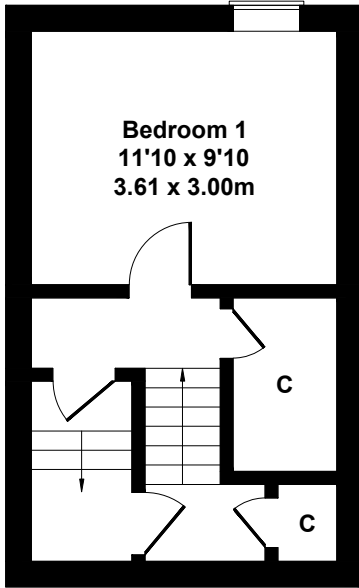
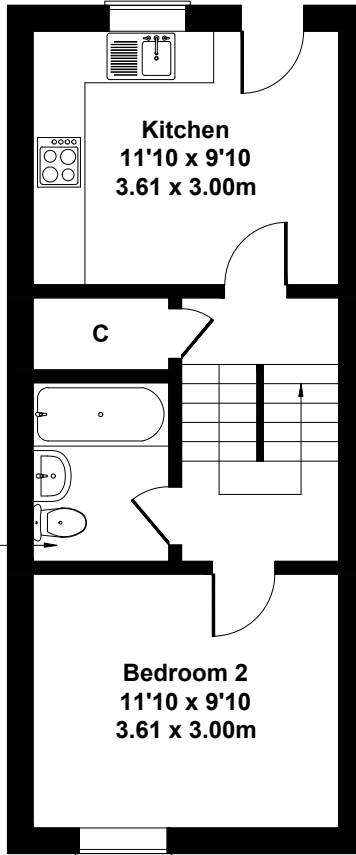


Approximate Gross Internal Area
799 sq ft - 74 sq m

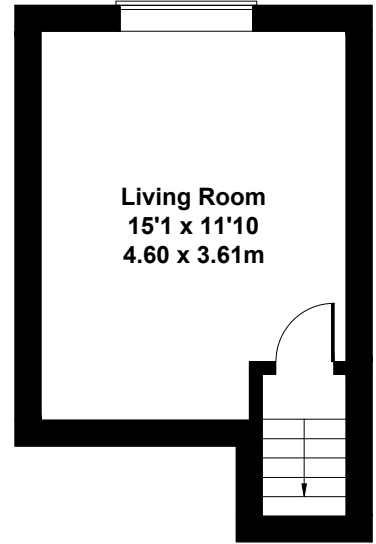
Bathroom
6'11 x 5'3
2.11 x 1.60m



FIRST FLOOR



SECOND FLOOR



THIRD FLOOR

SKETCH PLAN FOR ILLUSTRATIVE PURPOSES ONLY

All measurements walls, doors, windows, fittings and appliances, their sizes and locations, are approximate only. They cannot be regarded as being a representation by the seller, nor their agent.